

Leveraging Federal Dollars for Safety in the Permian Basin

Regional Safety Luncheon Series

October 23rd, 2024



TODAY'S PRESENTATION



Safe Streets and Roads for All (SS4A Program)

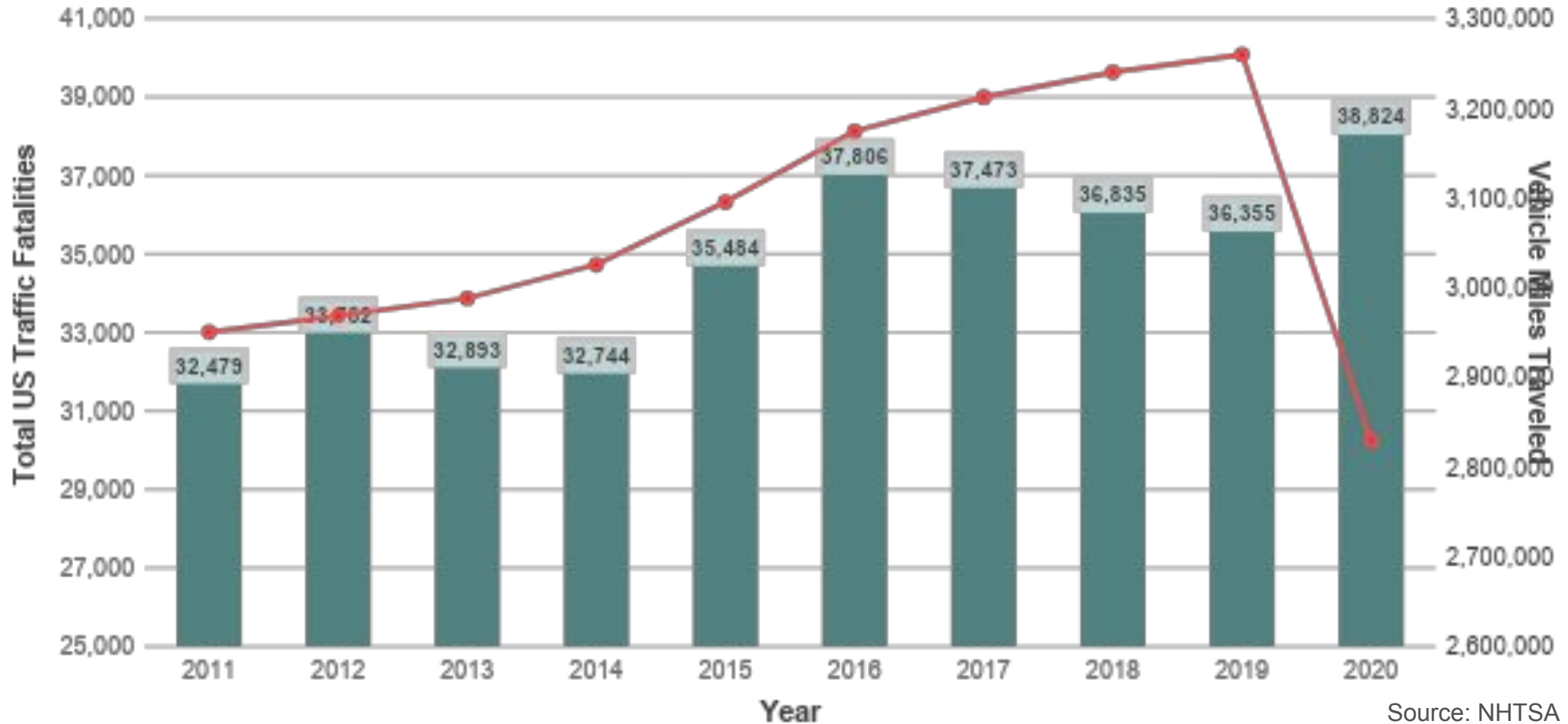


SS4A in the Permian Basin



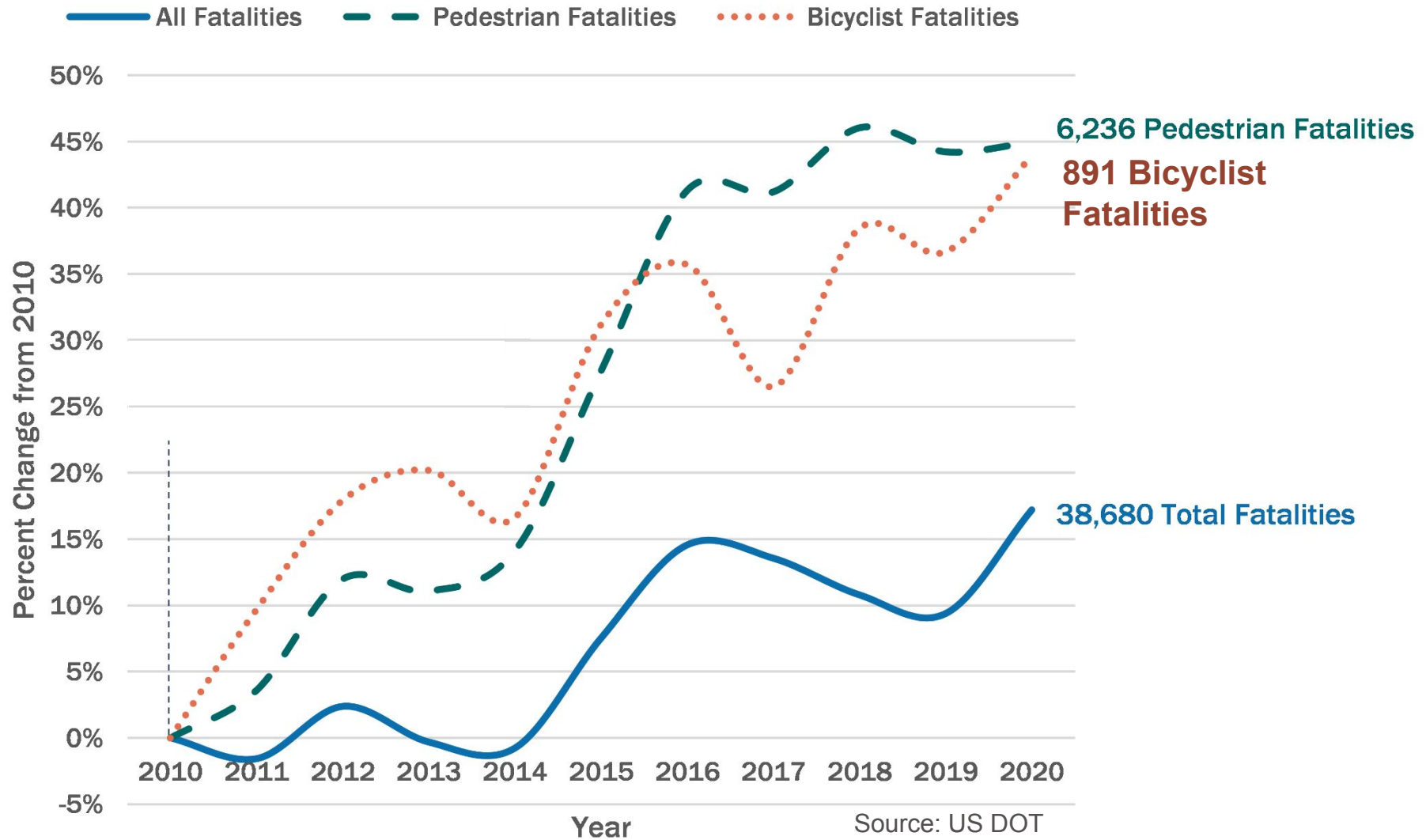
THOUSANDS OF LIVES ARE LOST EACH YEAR

Total US Traffic Fatalities and VMT (2011-2020)



Source: NHTSA

BICYCLISTS & PEDESTRIANS ARE AT HIGHER RISK



WHAT IS VISION ZERO?

TRADITIONAL APPROACH

- Traffic deaths are **INEVITABLE**
- **PERFECT** human behavior
- Prevent **COLLISIONS**
- **INDIVIDUAL** responsibility
- Saving lives is **EXPENSIVE**



WHAT IS VISION ZERO?



VISION ZERO

- Traffic deaths are **PREVENTABLE**
- Integrate **HUMAN FAILING** in approach
- Prevent **FATAL & SEVERE CRASHES**
- **SYSTEMS** approach
- Saving lives is **NOT EXPENSIVE**



USDOT & VISION ZERO



VISION ZERO NETWORK

Today we commit that our goal is this: Zero. **Our goal is zero deaths**; a country where, one day, nobody has to say goodbye to a loved one because of a traffic crash.

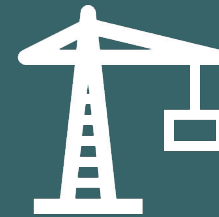
Pete Buttigieg, U.S. Secretary of Transportation, on National Roadway Safety Strategy release, January 27, 2022

SAFE STREETS & ROADS FOR ALL

- Grant program - \$5B over 5 years (2022-2026)

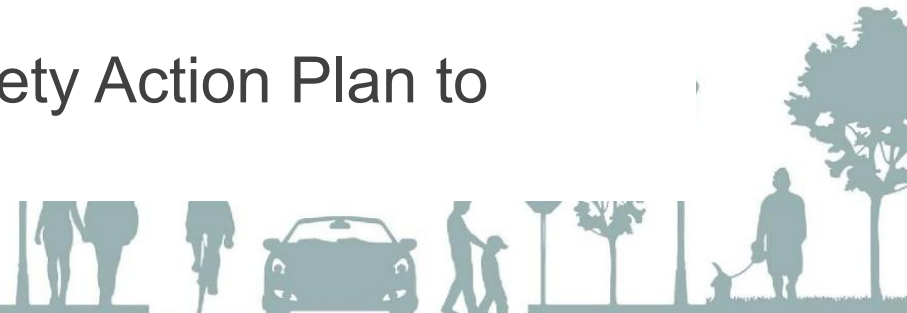


**Planning & Demonstration
Funding**



Implementation Funding

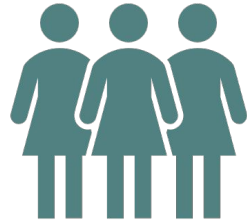
- Applicants must have a Safety Action Plan in place in order to be eligible for Implementation Funding
- Eligibility requirements must be met for the Safety Action Plan to qualify



TEXAS & VISION ZERO



SS4A Plan Components



Strategy & Policy

Progress & Evaluation



Lori Blong • Following

Partner - Octane | Mayor - City of Midland
3w • 🌐

Traffic safety is a concern for all of us in Midland. That's why I'm proud to announce the launch of the Safe Passage Initiative, a collaboration between the Midland Police Department and the City of Midland, and it's already making our streets safer.

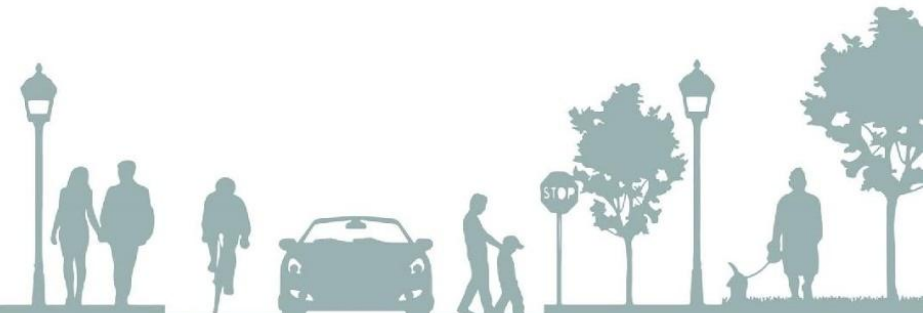
Safe Passage will be focusing on targeted locations and violations, allocating resources for successful completions, and collecting data to evaluate effectiveness and develop future strategies.

One key component is "Operation Intersection Intervention," which focuses on our most dangerous intersections, including Midkiff and Wadley, and Andrews Highway and Midland Drive, among others.

Since launching this operation on June 17, we've seen significant progress:

- 1,956 traffic stops conducted
- 1,261 citations issued
- 48 arrests made

Most encouragingly, there's been a decrease in traffic collisions, with July marking the fewest crashes since January 2021.

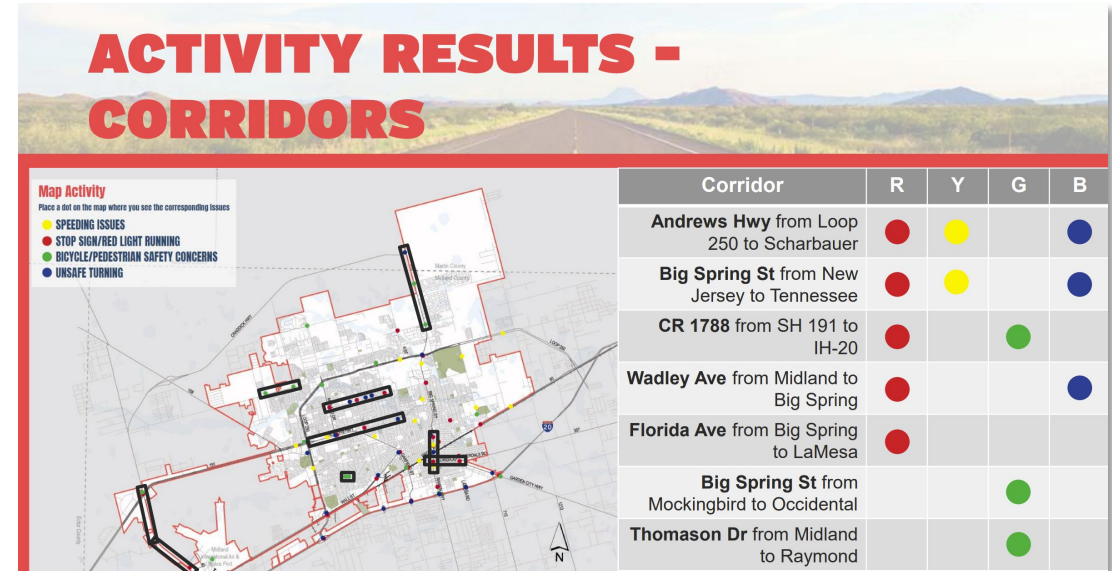


SS4A Plan Components

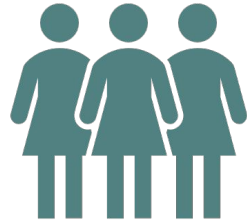


Strategy & Policy

Progress & Evaluation



SS4A Plan Components



Strategy & Development

Progress & Evaluation



PERMIAN BASIN

Safety Action Plan

ECTOR COUNTY

High Injury Network

Sources: TxDOT, Replica Data

Legend

- High Injury Network
- Study Boundary
- Other PBRPC Area, Covered by Existing CSAP

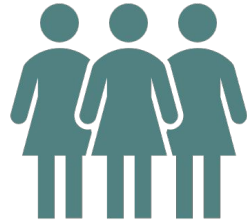
5.7% of Total Roadway Network in Ector County
66.2% of Fatal (K) Crashes
41.2% of KAB Crashes

Kimley»Horn

0 2 3 6 9 Miles



SS4A Plan Components



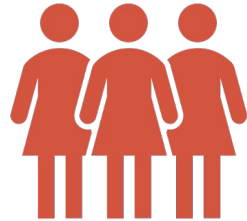
Strategy & Balance



Progress & Growth



SS4A Plan Components



Strategy & Policy

Progress & Evaluation

MIDLAND

15 to 24 years old

70% more



25 to 34 years old

51% more



UNITED STATES

Traffic-related injuries are #1 cause of death for young age groups:

5-9
years old

10-14
years old

15-24
years old



SS4A Plan Components



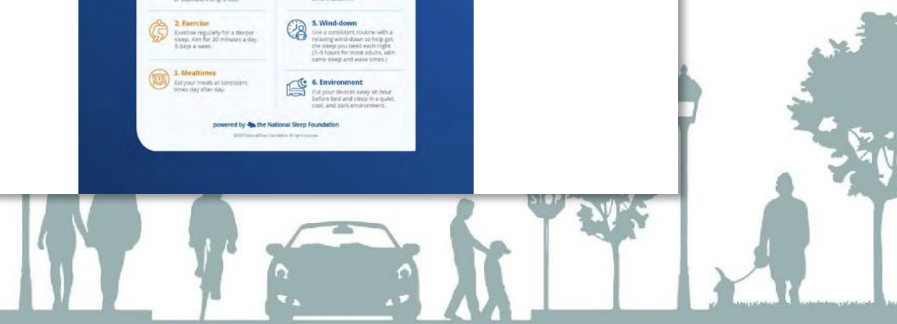
Strategy & Progress &

Figure 33. NHTSA Infographic for the "Take a Break. Drive Awake." Campaign

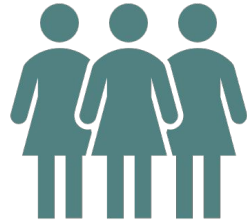


Source: NHTSA

Figure 34. Educational Infographic from the Nation Sleep Foundation

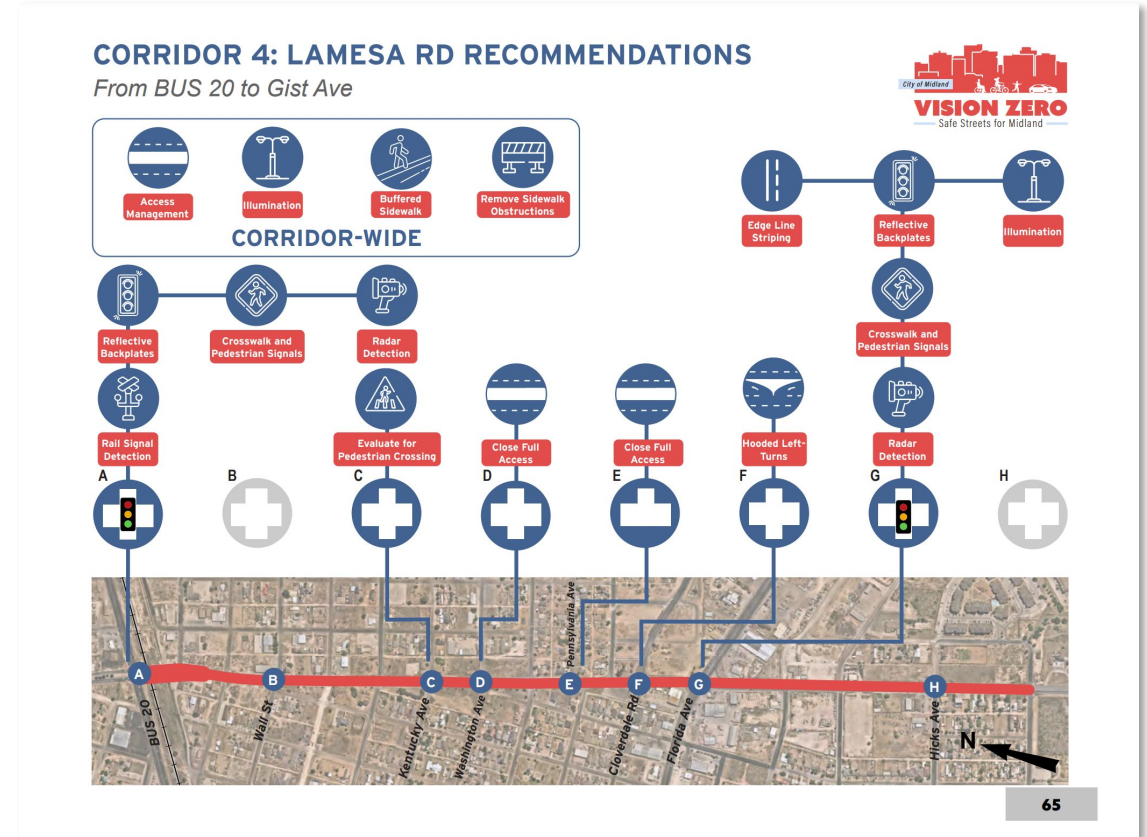


SS4A Plan Components



Strategy & Equity

Progress & Data



SS4A Plan Components



Strategy & Development

Progress & Evaluation

Distracted Driving Recommendations

Distracted driving crashes are categorized as a crash in which at least one driver was distracted, inattentive, or using a cell phone. This includes the contributing factors of Distraction in Vehicle, Driver Inattention, or Cell/Mobile Phone Use.

The following graph displays the baseline or average annual fatal injury (K) and suspected serious injury (A) crashes from 2018 to 2022 in the Midland County study area that are categorized as distracted driving. Additionally, one trendline (orange) represents the historic crash trend if no safety improvements were made and the other trendline (blue) represents the target crash trend in conjunction with the Midland County resolution of Vision Zero by 2050.

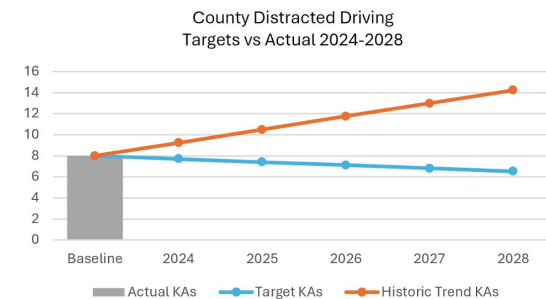


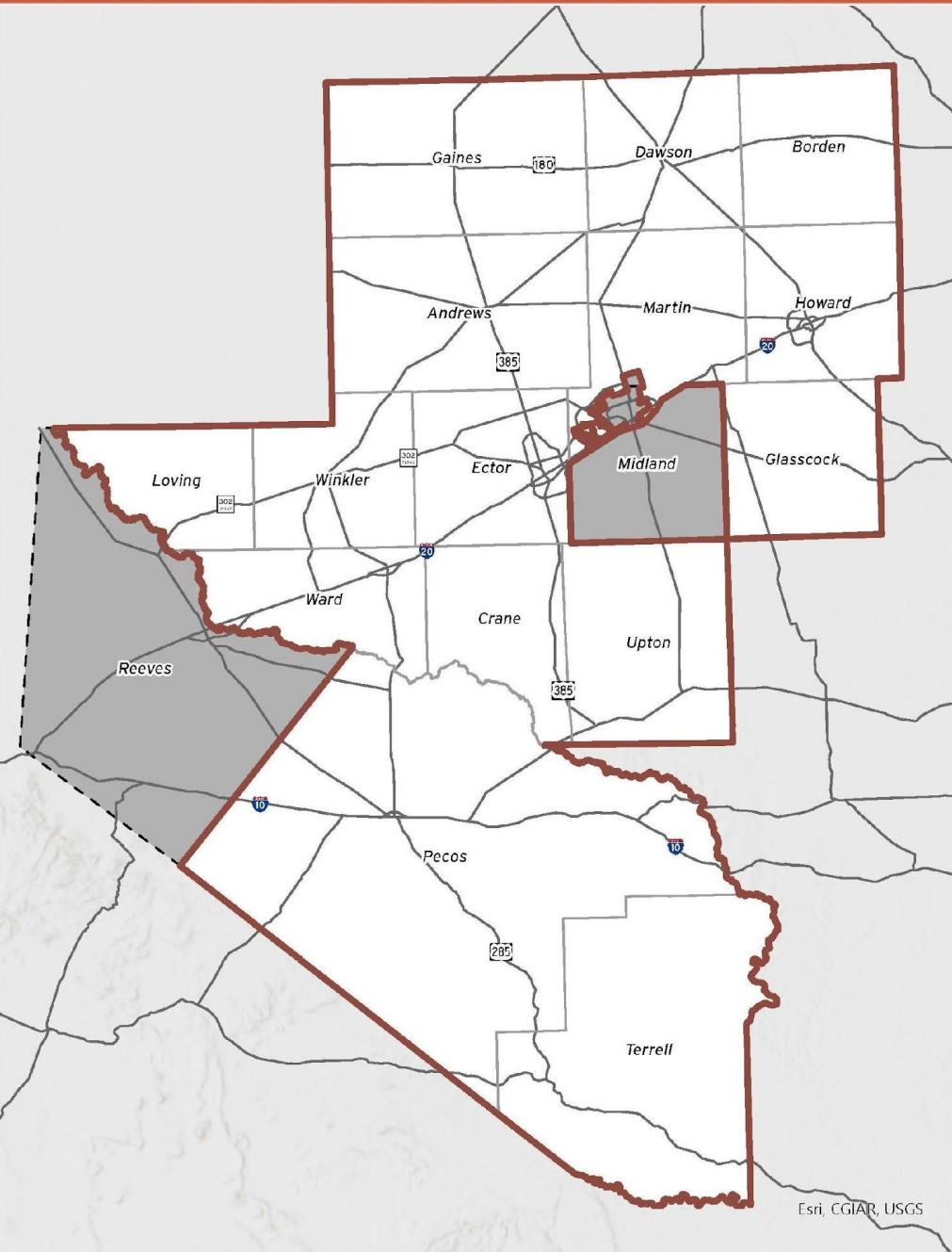
Table 4. Distracted Driving Strategies Progress Updates

Action #	Description	Action Status	Performance Metric	Baseline	Progress Year					
				2024	2025	2026	2027	2028	2029	
Strategy DD1.	Update existing roadway design standards to help minimize distracted driving crashes and their severity.									
Action DD1.1	Update roadway design standards to include the usage of wide edge lines on rural roadways.		Completion of updated design standards.							
Action DD1.2	Conduct a roadway signage audit for County facilities every 3 years.									



SS4A IN THE PERMIAN BASIN





Areas with Safety Action Plan efforts:

- City of Midland – Adopted April 2024
- Midland County (South of I-20) – Adopted August 2024
- Reeves County - Ongoing
- PBRPC - Ongoing



PERMIAN BASIN SS4A EFFORTS

August 2023

- Vision Zero Midland Project Kick-Off (both City and County plans)

March 2024

- Reeves County Project Kick-Off
- PBRPC Project Kick-Off

April 2024

- City of Midland CSAP Adopted

August 2024

- Midland County CSAP Adopted
- City of Midland awarded Implementation Funding for Lamesa Rd

April 2025

- Anticipated Adoption for both Reeves County & PBRPC Regional Safety Action Plans

VISION ZERO MIDLAND

- Partnership between City of Midland and Midland County
- First Vision Zero program for the region
- City of Midland self-funded its own CSAP to cover City limits
- Recently award \$8.5 Million to begin work on Lamesa Rd



Vision Zero Midland Cover



MIDLAND COUNTY CSAP

- The CSAP aims to prioritize and apply for funding for safety improvements across all modes of transportation
- County awarded SS4A grant to develop a Comprehensive Safety Action Plan (CSAP) for the area south of I-20
- Awarded additional grant funding for the Five Points intersection



Task Force Meeting

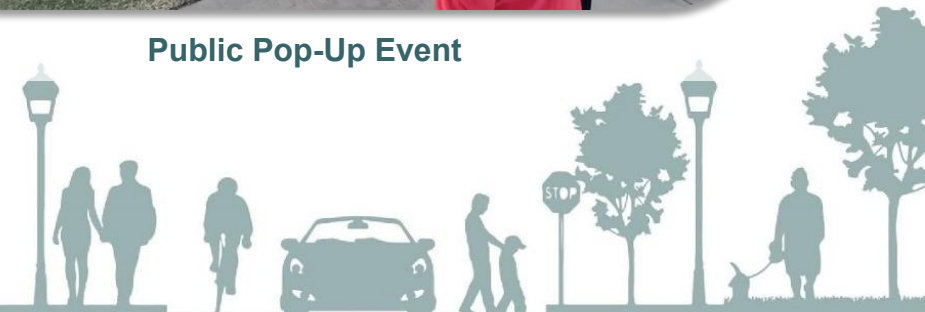


VISION ZERO MIDLAND AND MIDLAND COUNTY CSAP

- Kimley-Horn's Role:
 - Manage both projects in tandem
 - Shared public engagement efforts
 - Established a stronger, long-term Vision Zero program
- Both projects kicked off in summer 2023
- Finalized in summer 2024



Public Pop-Up Event



Permian Basin Regional Planning Commission (PBRPC) CSAP

- Ongoing, produced through an SS4A planning grant
- County Pop-Up Events: Began in September, wrapping up first week of November
- Regional Safety Steering Committee (RSSC) Meetings: Third meeting on November 5th
- Online Engagement: Social Pinpoint website currently open!
- Draft plan expected in February 2024



Reeves County CSAP

- Ongoing, produced through an SS4A planning grant
- Pop-Up Event scheduled in December, Christmas Tree Lighting
- Zero Roadway Death Goal Committee: Meeting #2 Today (10/23)
- Draft plan in March 2025



Monica Powell, AICP, RSP1
Kimley-Horn

817-339-2240
Monica.powell@kimley-horn.com

Thank you!

