

NMDOT

PERMIAN ROAD SAFETY COALITION NMDOT DISTRICT 2

Carlsbad, May 16th 2023



NMDOT

PRESENTER:

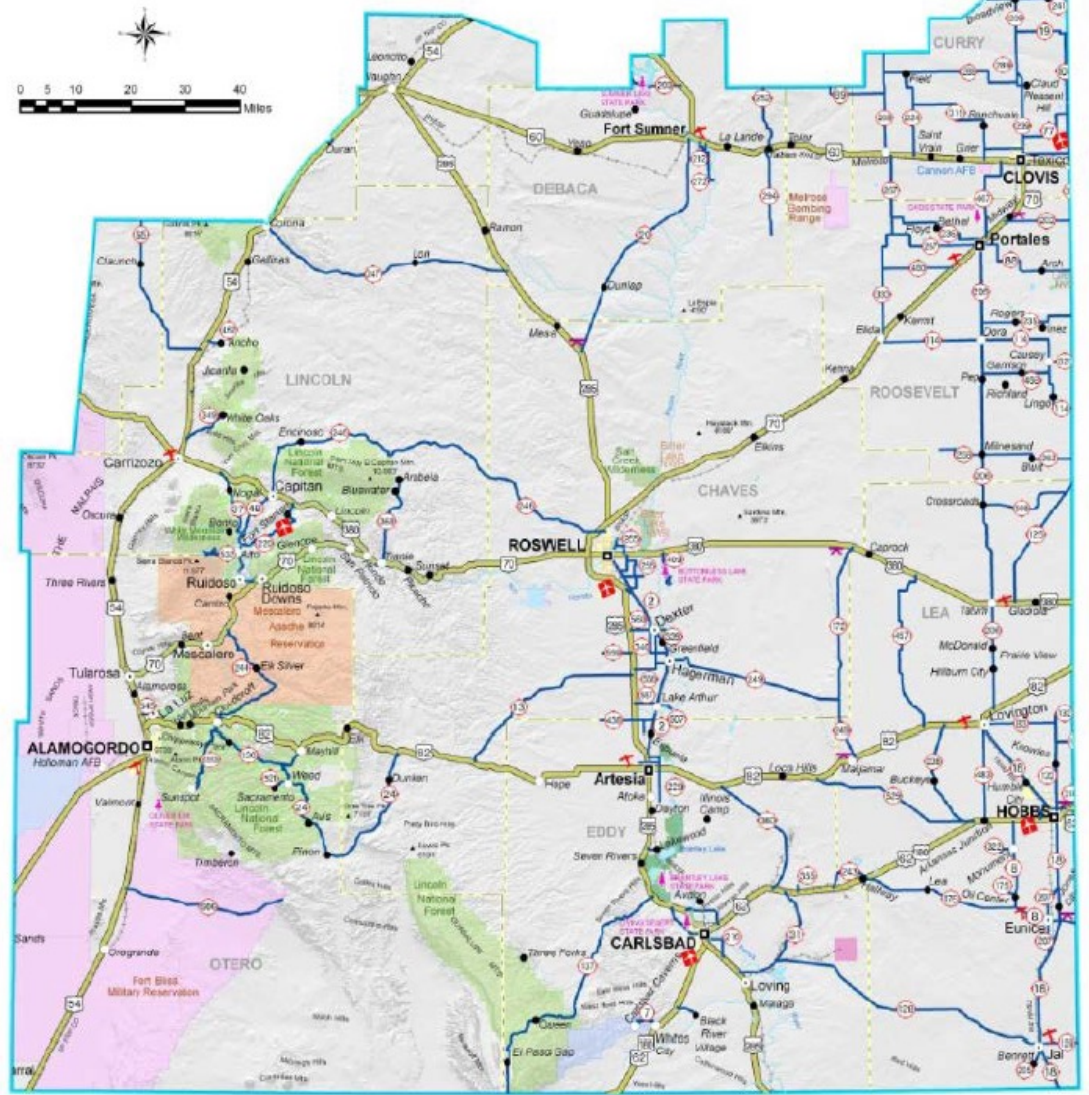
MICHAEL SMELKER, PE
ASSISTANT DISTRICT ENGINEER



BRIEF BACKGROUND



District 2



- **District 2:** Chaves, Lincoln, Otero, Eddy, Lea, Roosevelt, Curry, De Baca, and parts of Guadalupe and Torrance Counties
- 7750 lane miles of travel, with the most 4 lane non interstate miles in the state.
- 137 communities served
- 16 patrol yards, 2 special crews, 6 project offices

PROJECTS
CURRENTLY
UNDER
CONSTRUCTION
US 285

2102164 – US 285 MP 16.39 TO MP 17.76 - \$16 MIL

2102162 – US 285 MP 6.7 – MP 17 - \$ 53 MIL

2102163 – US 285 MP 17.3 TO 21.74 \$29 MIL

PROJECTS
CURRENTLY
UNDER
CONSTRUCTION
EDDY COUNTY

US 82 – GREEN STREET BRIDGE

2101881R2 US 82 MP 171 TO MP 172
LOVINGTON – 21 MIL

9900808R2 – US 285 MP 38.5 TO MP 42,
INTERSECTION LIGHTING

210467- NM 200 - 62/180
INTERSECTION LIGHTING / SIGNAL

FUTURE PROJECTS

US 285 / NM 31 Intersection FY 23

Estimated Construction Cost: **\$22 million**

City of Jal Improvements FY 24

Estimated Construction Cost: **\$30-\$40 million**

NM 31 and NM 128 Site Safety Improvements FY 24/25

Estimated Construction Cost: **\$2-\$20 million**

NM 128 from NM 31 to the WIPP Road

Estimated Construction Cost: **\$50-\$55 million**



FUTURE PROJECTS

NM 31 MP 0 TO MP 8:

- ▲ Improvements to NM 31 from 0.5 miles east of U.S. 285 through the NM 128 intersection.
- ▲ The NM 31-128 intersection
 - » Estimated Construction Cost: **\$70-\$80 million**

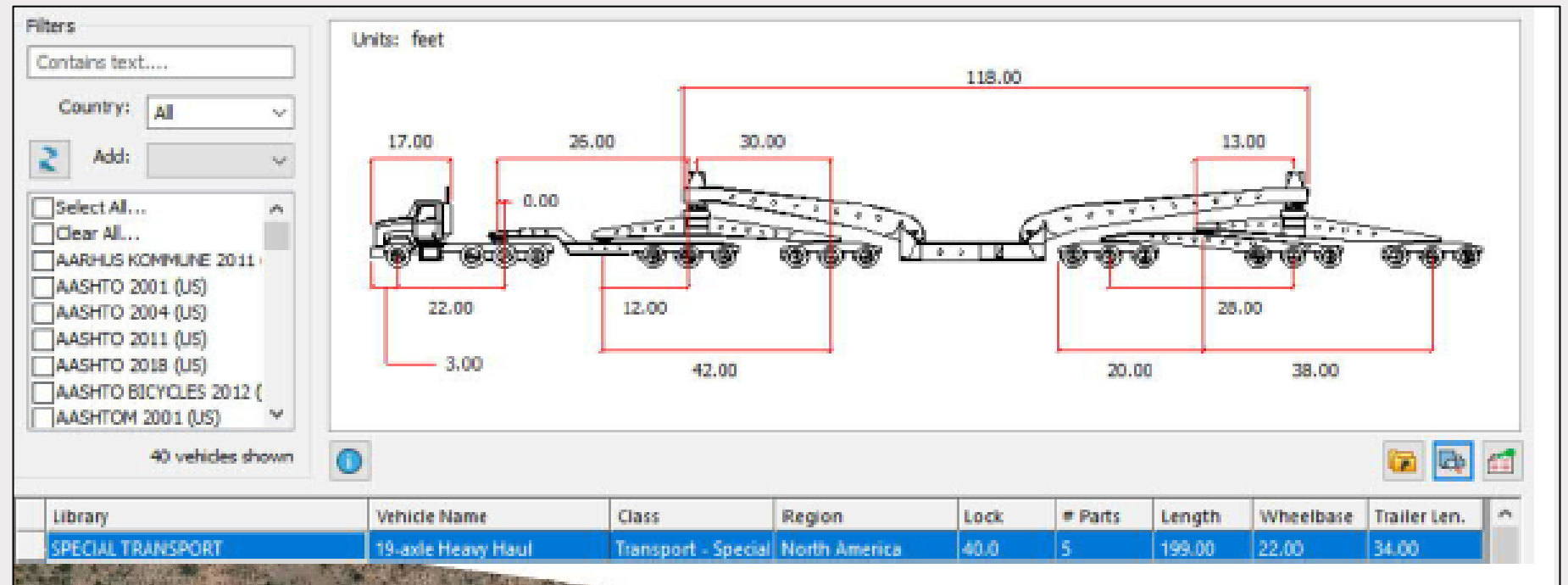
NMDOT

PROPOSED
RURAL
INTERSECTION
ALTERNATIVES
ROUNDBOUT



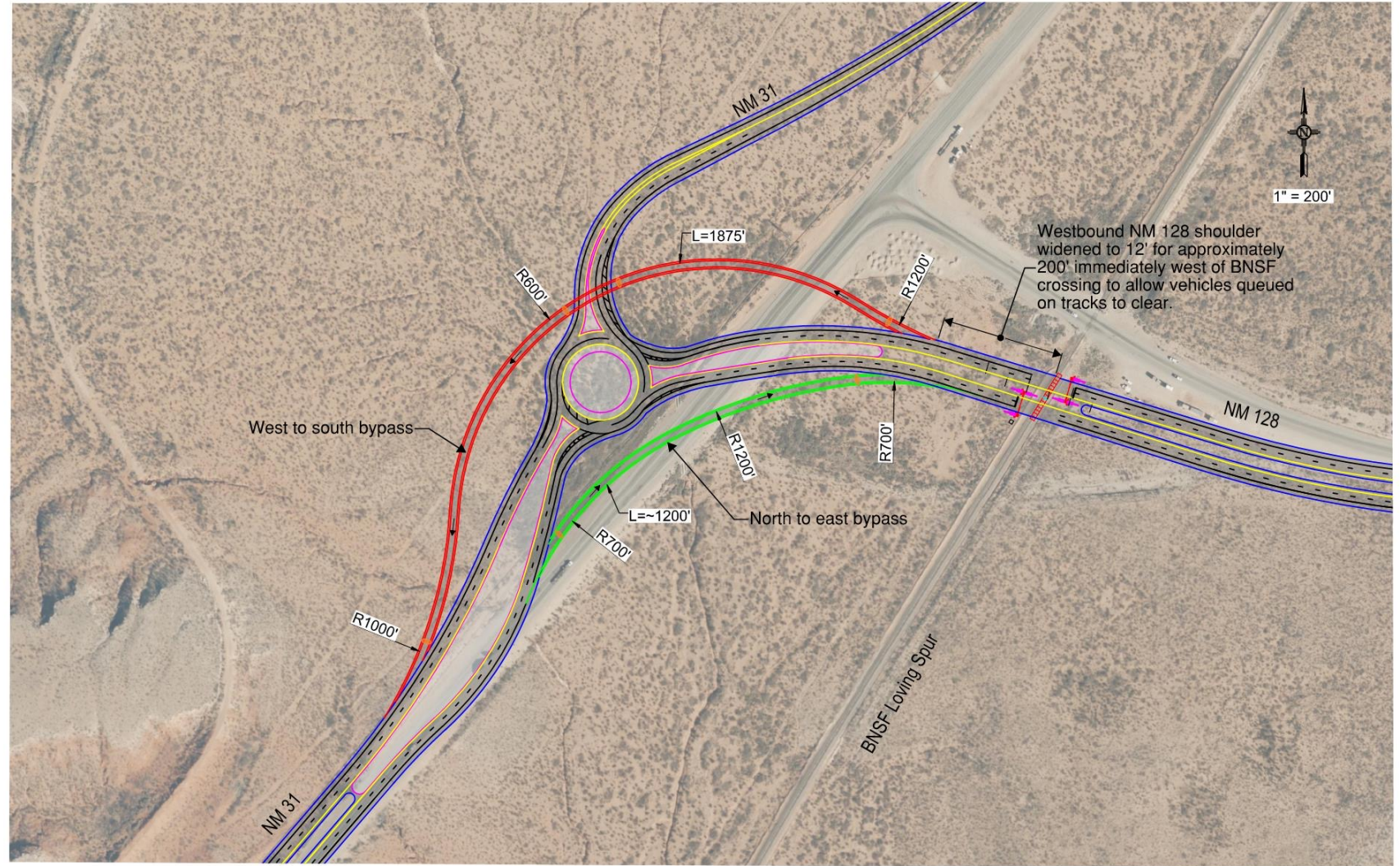
- NM 31 – Refinery Road
- NM 31-128

Design Vehicle: 19-Axle – 199' long x 22' wide
 NMDOT Permits: 200' long x 22' wide
 Wind Turbine Blades: 276' long



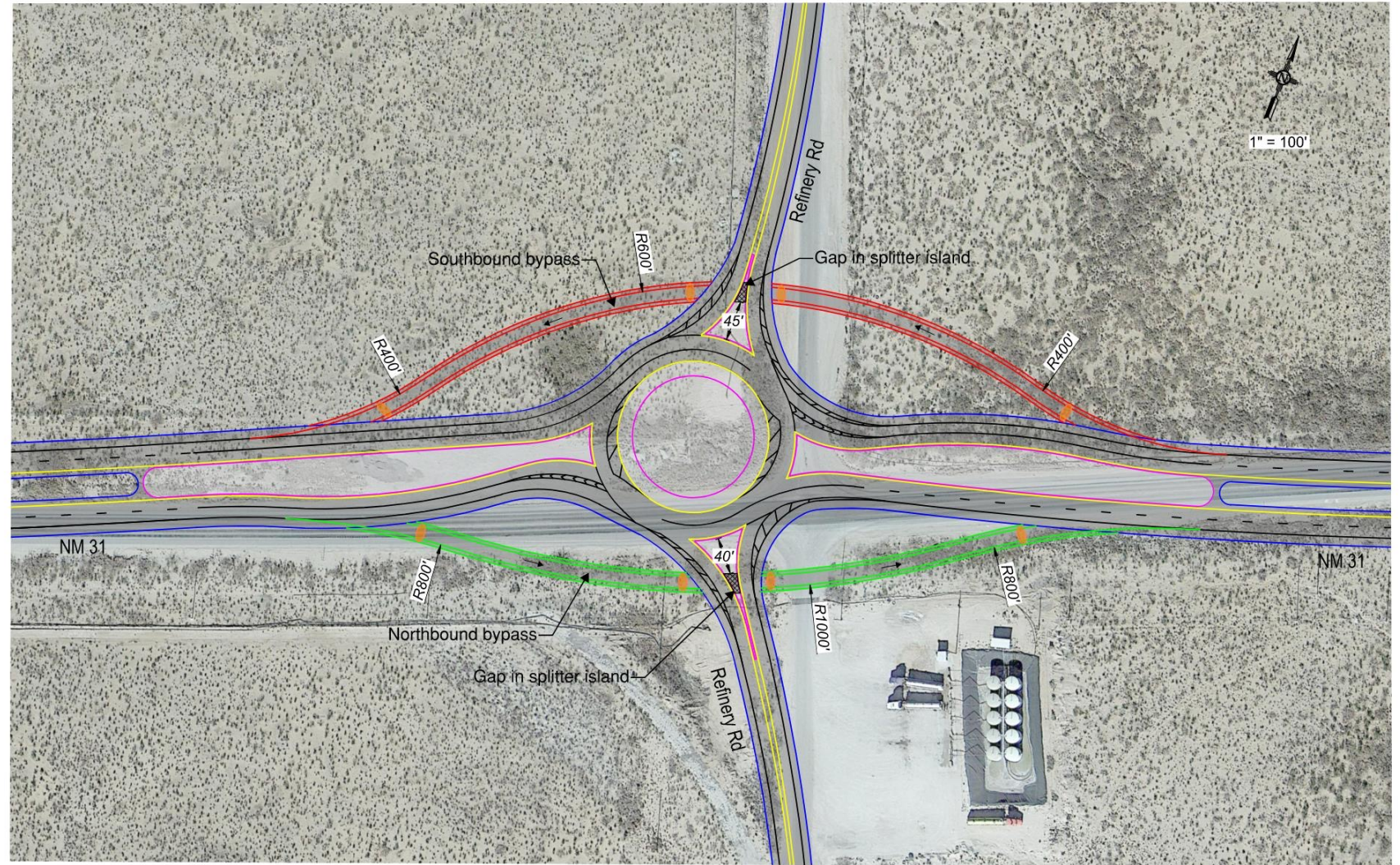
Proposed Rural Intersection Alternatives

NM 31-128 Roundabout



Proposed Rural Intersection Alternatives

NM 31-Refinery Road Roundabout

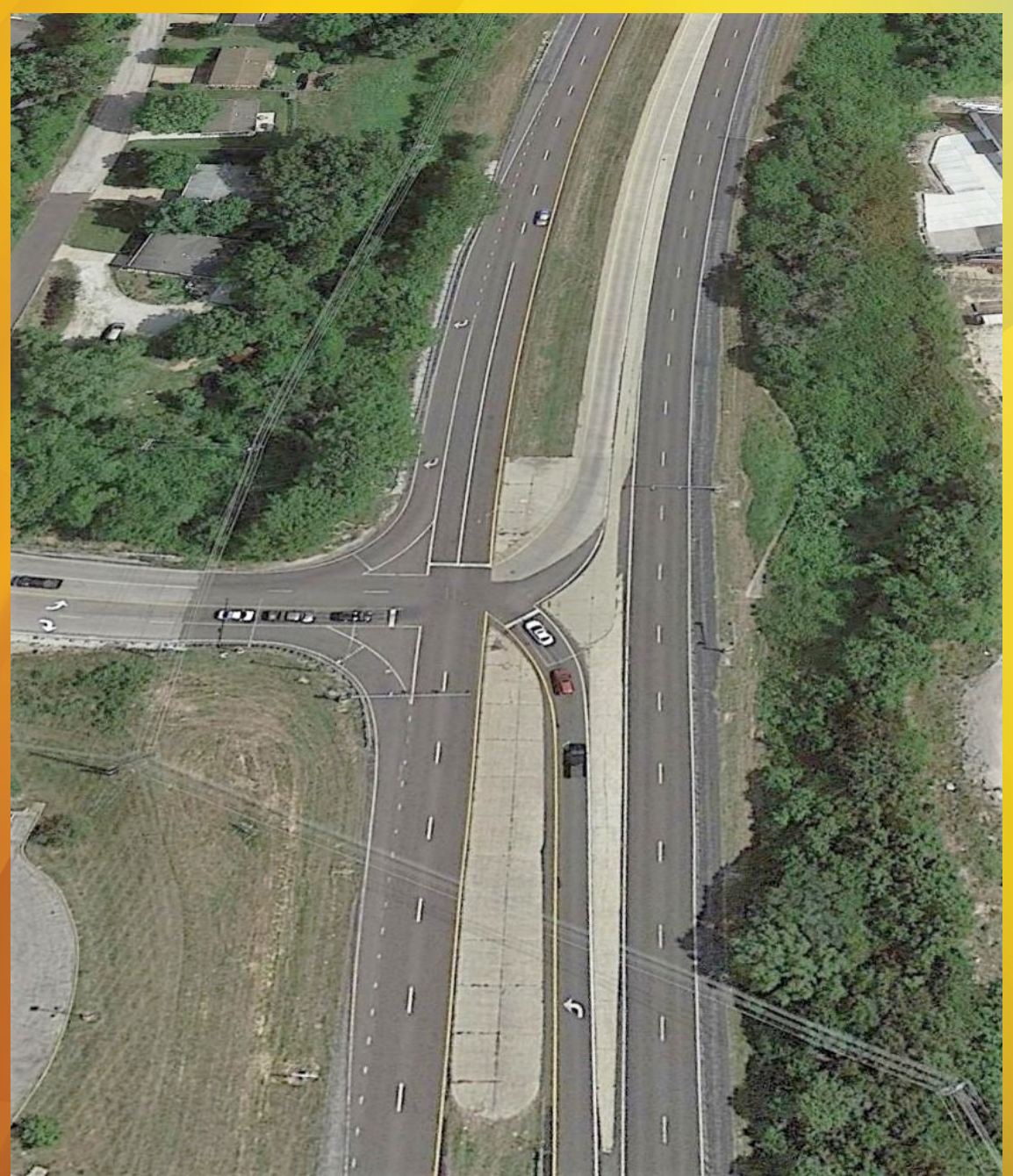


Proposed Rural Intersection Alternatives

High T

Intersections

- NM 31 / US 62
- NM 128 / WIPP
- NM 128 Orla
- NM 128 / Buck Jackson



NMDOT

Proposed Rural Intersection Alternatives

Restricted Crossing U-TURN (RCUT)



PROJECTS
CURRENTLY
DESIGN PHASE

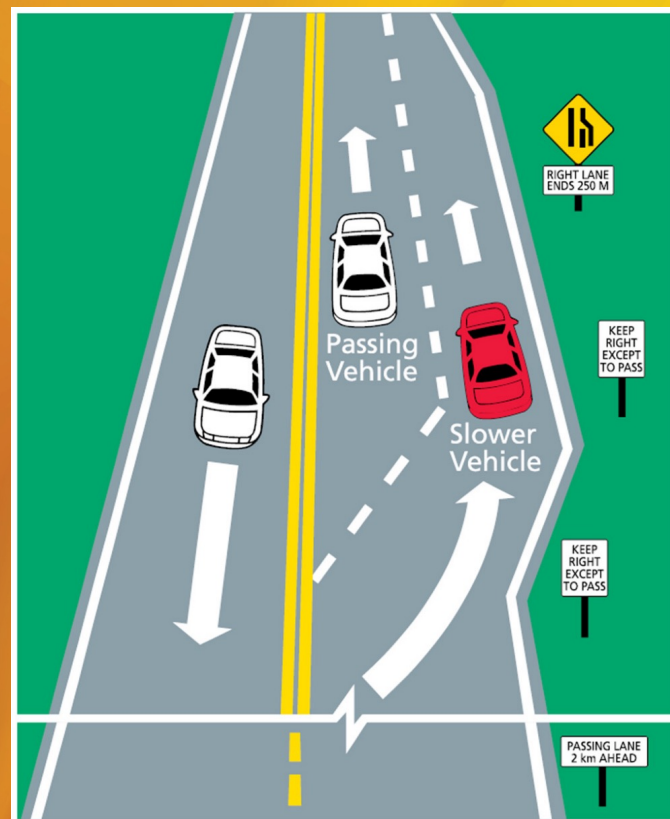
2104730 – US 62 SAFETY IMPROVEMENTS

2104740 – US 54 SAFETY IMPROVEMENTS

2100742- US 380 CORRIDOR

ENHANCED 2-LANE ALTERNATIVES PASSING LANES

US 380



GROWTH SOUTH EASTERN NM CARLSBAD – US 62/180 AND US 285



NMDOT

EMERGENCY SAFETY PROJECTS

US 82

US 82 - Emergency Rockfall



Figure 1: Pre-failure screen capture from Google Street View. Dislodged limestone block circled in yellow.

US 82 - Emergency Rockfall



Figure 2: Post-failure photo. Rockfall scarp circled in yellow.

US 82 - Emergency Rockfall



Figure 3: Overview photo of rockfall prior to cleanup of largest blocks.

US 82 - Emergency Rockfall



Figure 4: Leftover rockfall debris on the slope, circled in red. Recommended to clean up by scalers or future storm events could bring this material to the roadway below. Temporary concrete barrier below this area should be considered until scaling can be performed.

NMDOT

QUESTIONS

