



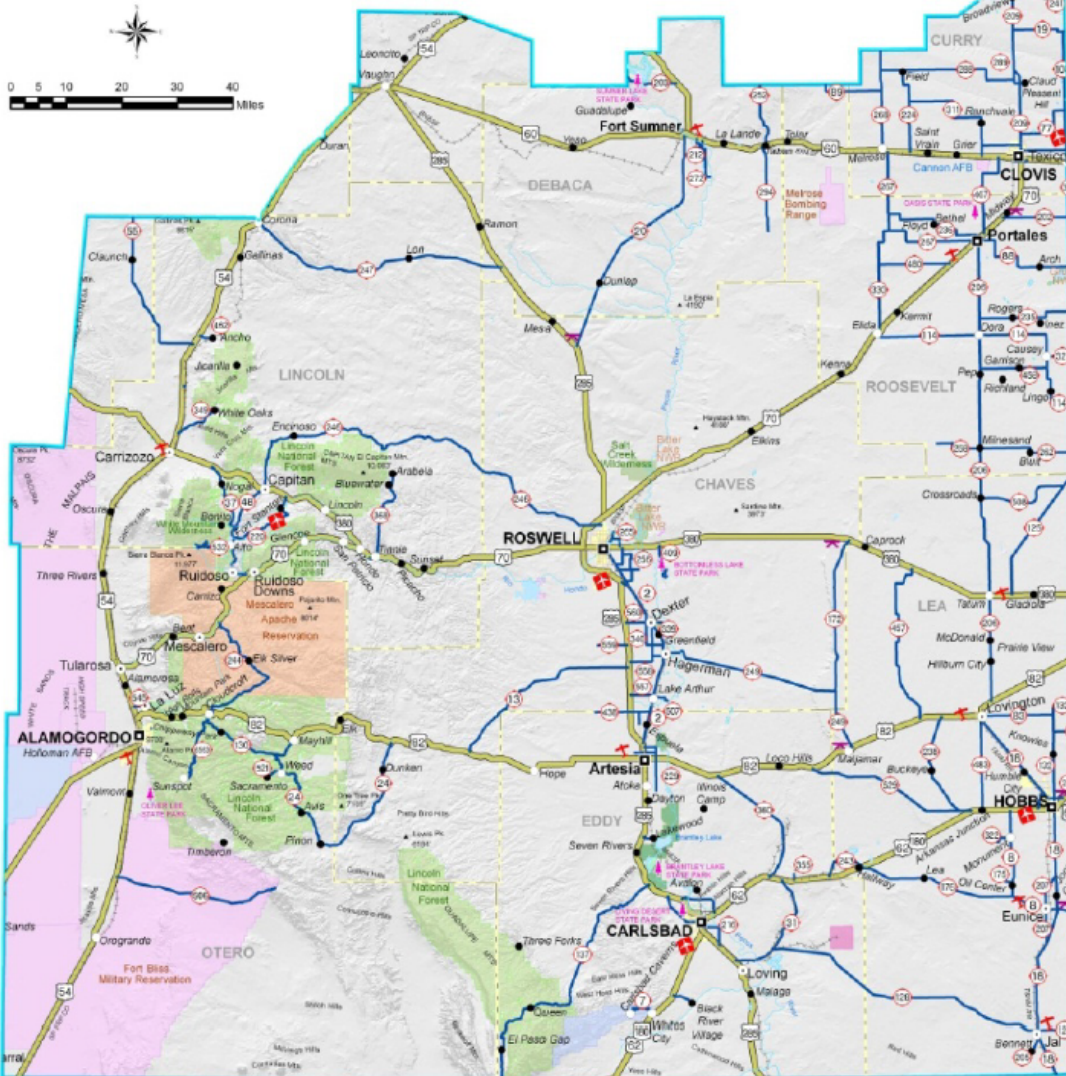
# NMDOT District 2 Update

October 23, 2019

Timothy L. Parker, M.S., P.E.  
District Engineer



## District 2



- **District 2:** Chaves, Lincoln, Otero, Eddy, Lea, Roosevelt, Curry, De Baca, and parts of Guadalupe and Torrance Counties
- 7750 lane miles of travel, with the most 4 lane non interstate miles in the state. 3840 lane miles of US Routes
- 137 communities served
- 16 patrol yards, 2 special crews, 6 project offices
- 332 FTE's, 185 maintenance, 76 construction, 50 support and 21 engineering
- Vacancy rate 17.5% (4th)
- Avg. turnover 4 per month

# Local Government Outreach

- SERPTO (41 member entities)
- SENMEDD (26 member entities)
- EPCOG (28 member entities)
- Regional coordination/outreach meetings

**CONSTRUCTION ACTIVITIES AND ACCOMPLISHMENTS**

<b>Ongoing Projects</b>	<b>Completed Projects</b>
US 82, Roadway Reconstruction, Eddy County, \$58 million	NM 128, Pavement Rehabilitation, Lea County, \$6 million
NM 209, Pavement Rehabilitation, Curry County, \$10 million	US 82, Tunnel Ceiling Reinforcement, Otero County, \$3 million
US 54, Roadway Reconstruction, Otero County, \$31 million	US 529, Pavement Rehabilitation, Lea County, \$24 million
US 82, Lovington ADA Improvements, Lea County, \$2.2 million	US 285, Pavement Rehabilitation, Chaves County, \$7.1 million
US 60, Cannon AFB Turn Lane, Curry County, \$4.4 million	US 380, Lincoln Walking Path, Lincoln County, \$1 million
US 84, Ft. Sumner Rehabilitation, De Baca County, \$8.2 million	US 70, Pavement Preservation, Lincoln County, \$7.5 million
US 54/ US 70, Guardrail Safety, Otero/Lincoln County, \$4.5 million	US 70, Entrance White Sands National Monument, Otero County, \$440 thousand
US 70/US 54, Tularosa ADA, Otero County, \$1.8 million	US 285, MP 2-22, Eddy County, Safety Corridor
NM 532, Hazardous Curve Correction & Drainage, Lincoln County, \$3 million	US 60, Pavement Reconstruction, Curry County, \$6 million
	US 285, Intersection Lighting, Eddy County \$2 million
	NM 48 Traffic Safety Devices installed (wildlife signs, flashing beacons, radar feedback signage, and speed studies)

**STIP PROJECTS**

<b>Bridge Projects Under Construction</b>		
<b>Scope of Work</b>	<b>Location</b>	<b>Total Project Cost (Est)</b>
Bridge Deck Replacement	US 70, Chaves County	\$3,600,000
Bridge Deck Replacement	US 70, Chaves County	\$4,100,000
Bridge Rehabilitation & Approach Replacement	US 70, Prince Street Bridge in Clovis	\$2,477,000
<b>Local STIP At A GLANCE</b>		
<b>Scope of Work</b>	<b>Location</b>	<b>Total Project Cost (Est)</b>
Lighting & Trail Facilities	Village of Ruidoso, County Club to River Trail Road	\$40,000
ADA Improvements	City of Clovis, Grand Ave to 4 <sup>th</sup> Street	\$300,000
Pavement Rehabilitation & ADA improvements	City of Roswell, South Atkinson	\$1,635,450
Construction of Path & Amenities	City of Lovington, Various Streets	\$383,157
<b>District Two STIP AT A GLANCE</b>		
<b>Scope of Work</b>	<b>Location</b>	<b>Total Project Cost (Est)</b>
Pavement Rehabilitation	US 84, Ft Sumner	\$8,000,000
Bridge Replacement	US 285, Eddy County	\$1,000,000
Roadway Construction	US 54, Lincoln County	\$15,000,000
Pavement Rehabilitation	US 82, Downtown Lovington	\$19,000,000



New Mexico DEPARTMENT OF TRANSPORTATION

ONE TEAM. ONE VISION. ONE VOICE.

TRAVEL INFORMATION DOING BUSINESS PROJECTS DISTRICTS/OPERATIONS NEWSROOM PUBLIC NOTICES

# ENDWI NOW



RAIL RUNNER



NEW MEXICO Park & Ride



NMRoads.com Travel Information

## Travel Information

- NMDOT Online Images Gallery
- Road Conditions
- Rail Runner Train Service
- Park & Ride Bus Service
- NMDOT Aviation
- Bicycle, Pedestrian, Equestrian
- New Mexico Scenic Byways
- Trucking Information
- Courtesy Patrol Information
- Rest Area Map
- Transit and Rail

## Business Resources

- Plans, Specifications & Estimates
- Construction
- Procurement
- Federal/Local Government Information (P.O.D)
- Request for Proposal
- State Transportation Improvement Program
- Letting Schedule
- CADD Standards
- Estimator
- Asset Management & Planning Division
- New Mexico 2040 Plan (NMDOT's Long Range Plan)
- SEC Municipal Advisor Rule Disclaimer
- International Programs

## News and Information

- Community Relations Contacts
- News Releases
- Photo Galleries
- Transportation Commission
- Meetings and Publications | 2019 Schedule
- Public Records
- Traffic Safety
- Research Bureau/Library
- Stewardship & Oversight Agreement
- State of New Mexico Rail Plan
- NMDOT Public Involvement Plan, Appendix
- STIC, State Transportation Innovation Council
- Sole Source/Emergency Procurement
- Transportation Asset Management Plan
- Environmental Bureau

Office of Inspector General  
Report Fraud and abuse  
Call 1-800-552-5555



---

## Statewide Transportation Improvement Program (STIP)

The Program Management Division is responsible with developing a four-year STIP that is cooperatively and/or consultatively planned, comprehensive in scope through the innovative use of Federal and State resources, fiscally constrained and attempt to address the multimodal transportation needs of New Mexico's transportation customers.

The State's four-year transportation preservation and capital improvement program identifies multi-modal transportation projects that use Federal, State Bond, State priority, State Capital Outlay and local government transportation funds. It includes projects of regional significance (projects with high public interest or air quality impacts) and projects in the National Parks, National Forests and Indian Reservations.

**Rebecca Maes, STIP Manager** Office: 505-476-3785 | [rebecca.maes@state.nm.us](mailto:rebecca.maes@state.nm.us)

---

### RELATED LINKS

[STIP Map and Contact information](#)

---

[STIP Procedures](#)

---

[eSTIP Public Site](#)

---



- [eSTIP Projects](#)
- [Amendments](#)
- [Advanced Search](#)
- [Projects by District](#)
- [Interactive Map](#)
- [Information](#)

## Statewide Transportation Improvement Program (STIP)

Control #  County  Lead Agency  Project Type  Federal Year  [Reset](#)

16 transportation project(s)

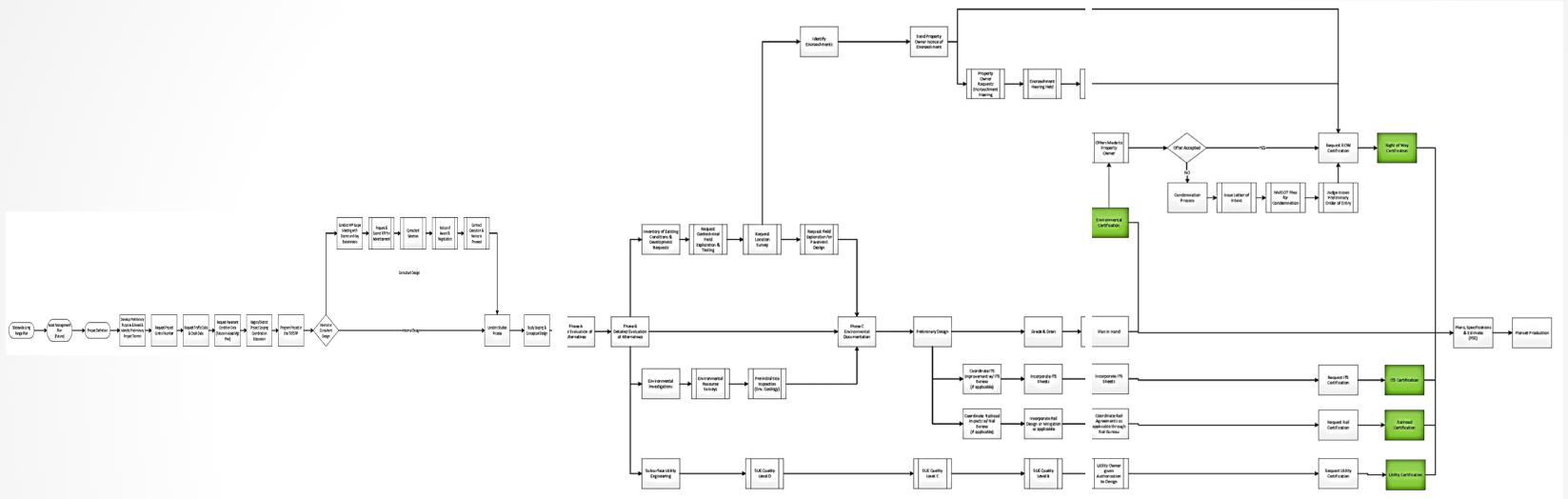
[Export to Excel](#)

Control #	Region	County	Lead Agency	Title	Project Type	Funds	Fed Yr	Total Cost
2104320	D2	Eddy	NM Dot	Hidalgo Rd US 62/180 - Traffic Signal	Signal/Signs (21)	Federal	2022	\$900,000
2103110	D2	Eddy	NM Dot	DOWNTOWN ARTESIA ADA	Bicycle and Pedestrian (28)	Federal	2020, Prior	\$1,063,089
2104150	D2	Eddy	NM Dot	US 285 Bridge Rehabilitation	Bridge - Rehab (14)	Federal	2020	\$1,302,989
2104331	D2	Eddy	NM Dot	NM 31 Construction Phase- <b>INFORMATIONAL</b>	Road - Reconstruction (6)	Federal	Future	\$11,700,000
2100361	D2	Eddy	NM Dot	Artesia ADA & Traffic Signals	ADA Improvements (28)	Federal	2020, Prior	\$4,985,606
9900808	D2	Eddy	NM Dot	Intersection Lighting at Carlsbad Relief Route	Safety (21)	Federal	2021	\$500,000
2102161	D2	Eddy	NM Dot	US 285 Corridor Construction Phase I	Road - Reconstruction (6)	State	2020	\$36,000,000
2104330	D2	Eddy	NM Dot	NM 31 Preliminary Engineering	Preliminary Engineering (15)	State	2020	\$2,500,000
2102162	D2	Eddy	NM Dot	US 285 Corridor Construction Phase II	Road - Reconstruction (6)	State	2020, 2021	\$36,400,000
2102164	D2	Eddy	NM Dot	US 285 Bridge Construction and Roadway Construction	Bridge - New Construction (8)	State	2020	\$7,000,000
2104440	D2	Eddy	NM Dot	NM 128 PE Phase	Preliminary Engineering (15)	State	2020	\$5,000,000
2102163	D2	Eddy	NM Dot	US 285 Corridor Construction Phase III	Road - Reconstruction (6)	State	2021	\$36,000,000
2101640	D2	Eddy	Transit / Rail Division	GREENE ST (US 62) RR CROSSING #0202119B, CARLSBAD	Rail - Highway Grade Separation (22)	Federal	2020	\$425,894
2101920	D2	Eddy	Transit / Rail Division	GRAND AVE RR CROSSING #019974R, ARTESIA	Rail - Highway Grade Separation (22)	Federal	2020, Prior	\$137,557
2101990	D2	Eddy	Transit / Rail Division	LAWRENCE RANCH ROAD AT RR CROSSING #019963D, NEAR ARTESIA	Rail - Highway Grade Separation (22)	Federal	2022	\$435,915
2101910	D2	Eddy	Transit / Rail Division	ORCHARD LANE RR CROSSING #020078Y, CARLSBAD	Rail - Highway Grade Separation (22)	Federal	2021	\$488,000



**estip.dot.state.nm.us**

# Project Development Overview



2 – 4 years

# Key Projects

- US 285 MM 0 to MP 22  
FULLY FUNDED
- NM 31 MM 0 to 8  
FULLY FUNDED
- NM 128 MM 0 to 52  
\$60M funded, short \$140M

# Unfunded Needs

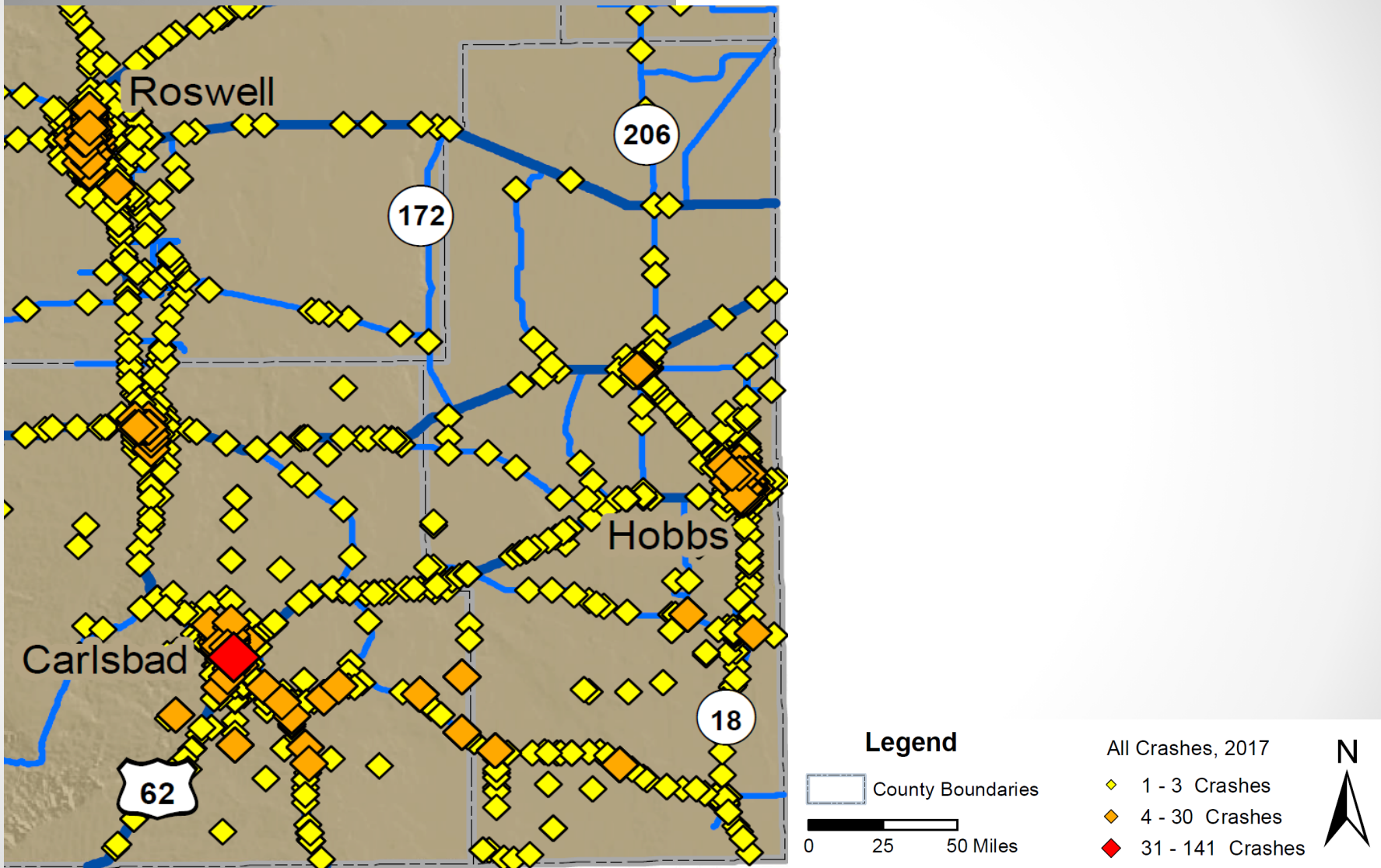
- NM 128 MM 0 to 52  
\$140M
- US 380 from Roswell to Tatum & State Line  
\$65M
- Hobson Road (Roswell) Intersection  
\$4M
- US 54 near Duran  
\$40M
- NM 18 S. of Jal  
\$28M



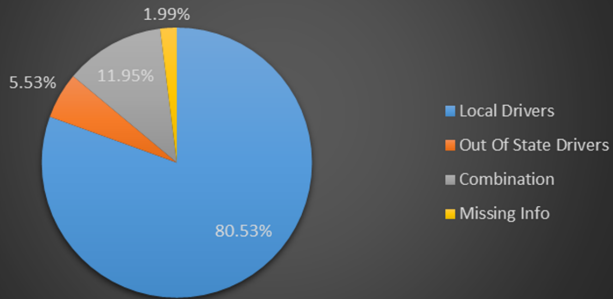
# NM 128 Safety Corridor



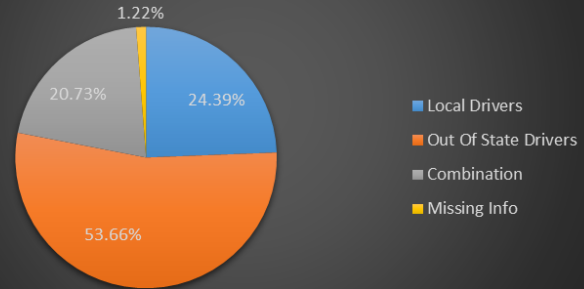
# Crashes '17



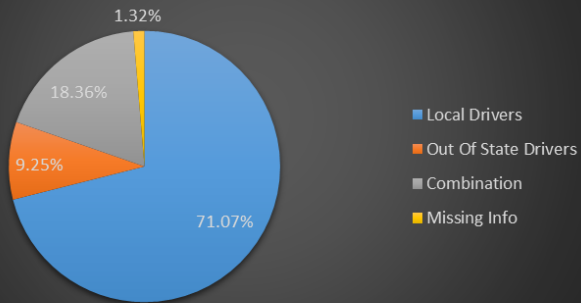
**TYPES OF DRIVERS IN CRASHES ON NM 18**



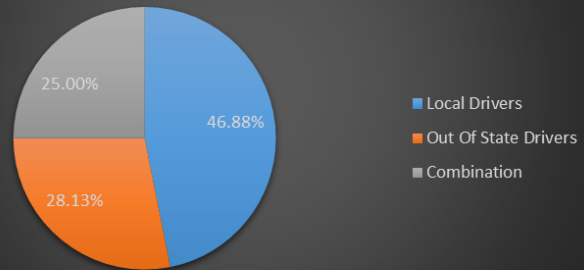
**TYPES OF DRIVERS IN CRASHES ON NM 128**



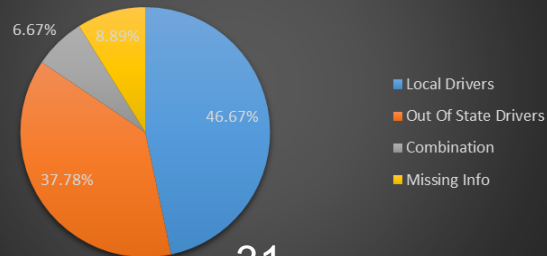
**TYPES OF DRIVERS IN CRASHES ON US 285**



**TYPES OF DRIVERS IN CRASHES ON NM 31**



**TYPES OF DRIVERS IN CRASHES ON NM 176**



2017

Thank you